

75 EXPRESS LANE PROJECT



CONSTRUCTION UPDATE



I-75 New Ramp Configuration at I-75 Southbound & Miami Gardens Drive

The Florida Department of Transportation (FDOT) is scheduled to implement a new ramp configuration at the I-75 southbound exit loop ramp to Miami Gardens Drive (Exit 4). Beginning 7 a.m. Wednesday, February 28, the previous I-75 southbound exit loop ramp to Miami Gardens Drive (Exit 4) will close and a new ramp configuration will open. Motorists exiting I-75 southbound at Miami Gardens Drive (Exit 4) will now be directed to turn left at the signalized intersection to continue east on Miami Gardens Drive.

Digital messaging signs will be placed along the I-75 corridor to inform the traveling public.

In the event of inclement weather or other unexpected conditions this opening will be rescheduled to occur at a later date.

CONTACT

For more information or to receive updates, please contact the project Community Outreach Specialist, Gerdy St. Louis, at 954.548.2754 or via e-mail at gerdy@iscprgroup.com

STAY CONNECTED



75-express.com



[@myfdot_sefl](https://twitter.com/myfdot_sefl)



www.fl511.com



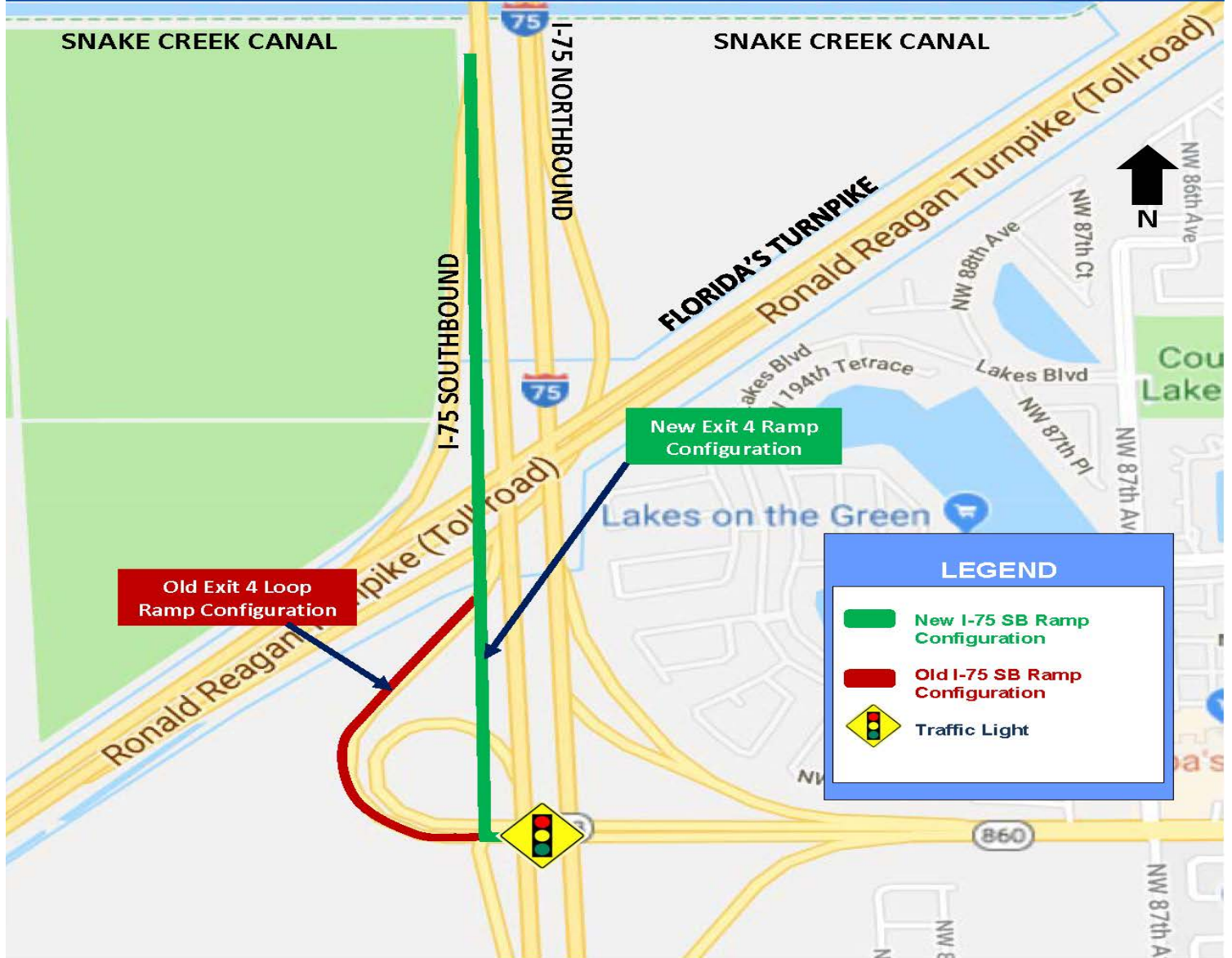
smartsunguide.com



NEW RAMP



The Florida Department of Transportation (FDOT) is scheduled to implement a new ramp configuration at the I-75 southbound exit loop ramp to Miami Gardens Drive (Exit 4). Beginning 7 a.m. Wednesday, February 28, the previous I-75 southbound exit loop ramp to Miami Gardens Drive (Exit 4) will close and a new ramp configuration will open. Motorists exiting I-75 southbound at Miami Gardens Drive (Exit 4) will now be directed to turn left at the signalized intersection to continue east on Miami Gardens Drive. Digital messaging signs will be placed along the I-75 corridor to inform the traveling public. In the event of inclement weather or other unexpected conditions this opening will be rescheduled to occur at a later date.



CONTACT

For more information or to receive updates, please contact the project Community Outreach Specialist, Gerdy St. Louis, at 954.548.2754 or via e-mail at gerdy@iscprgroup.com

STAY CONNECTED



75-express.com



[@myfdot_sefl](https://twitter.com/myfdot_sefl)



www.fl511.com



smartsunguide.com