



CONSTRUCTION UPDATE

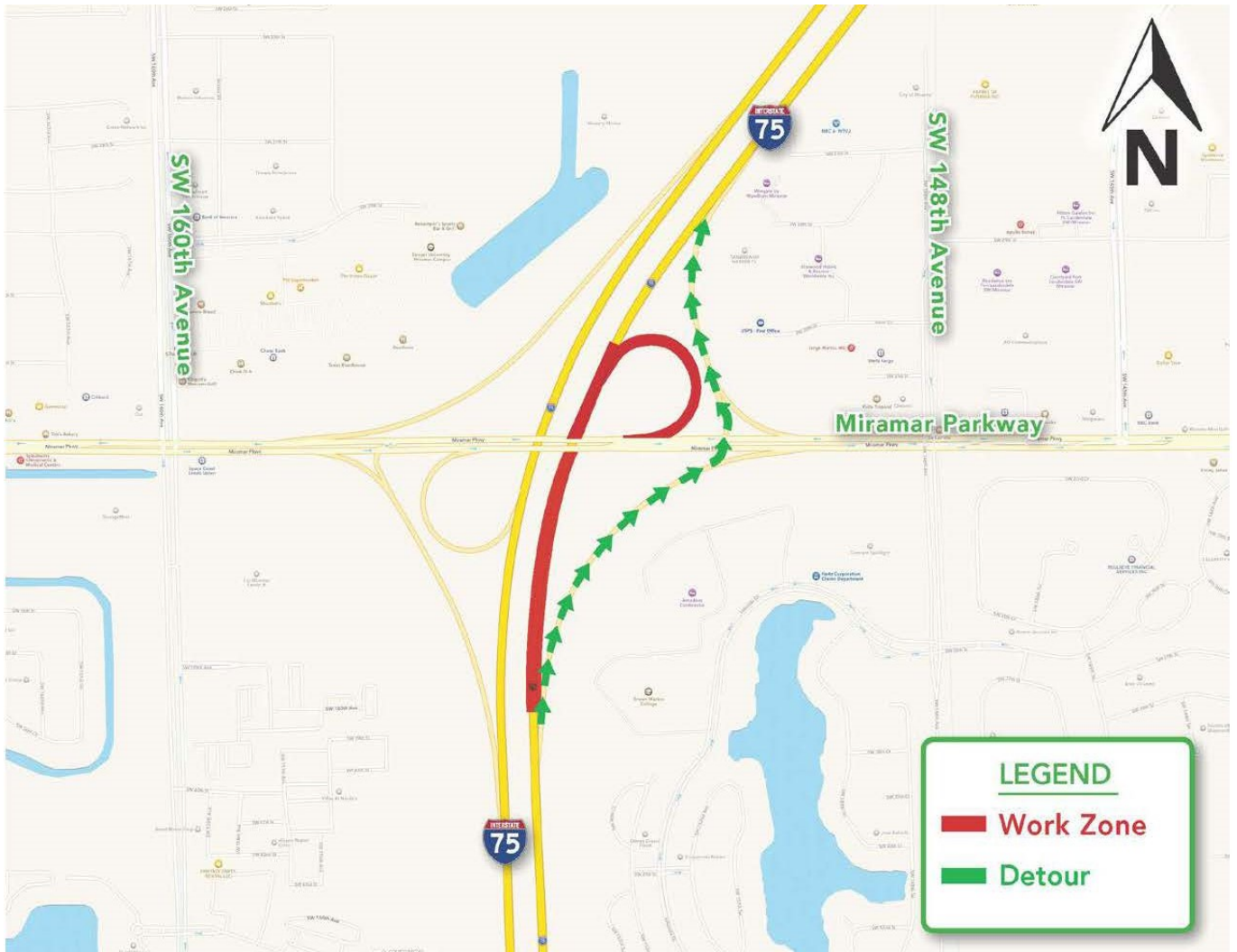
Full Closures on I-75 Northbound at Miramar Parkway Scheduled to Begin Wednesday, November 30

The Florida Department of Transportation (FDOT) is scheduled to close all northbound lanes of I-75 at Miramar Parkway for bridge construction on the Miramar Parkway Interchange. In order to perform this work safely, traffic will be detoured during the following dates and times:

All lanes of I-75 northbound at Miramar Parkway will be closed from 11 p.m. Wednesday, November 30 to 5 a.m. Thursday, December 1. Motorists will be detoured to the exit ramp at Miramar Parkway East (Exit 7A) and at the top of the ramp cross over Miramar Parkway to re-enter I-75 northbound using the Miramar Parkway on-ramp. Please follow posted detour.

If necessary to complete the work, these lane closures will also take place from 11 p.m. Thursday, December 1 to 5 a.m. Friday, December 2.

Please note that this schedule may change due to inclement weather or other unexpected conditions.



.....

CONTACT

For more information or to receive updates, please contact the project Public Information Officer, Gerdy St. Louis, at 954.548.2754 or via e-mail at gerdy@iscprgroup.com

STAY CONNECTED


75-express.com


[@myfdot_sefl](https://twitter.com/myfdot_sefl)


www.fl511.com


smartsunguide.com